

# Plastics Packaging Tax

Encouraging businesses to use recycled plastics



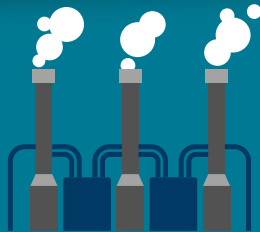
when



The government-led plastics packaging tax will come into effect on the 1st April 2022. The tax aims to provide an economic incentive for businesses to incorporate recycled plastic into manufacturing.

# 1<sup>st</sup> April 2022

who



UK manufacturers of plastic packaging



UK customers of plastic packaging manufacturers and importers



Consumers of plastic packaging in the UK

how

# £200 per tonne

The rate of tax will be £200 per metric tonne of plastic packaging that does not contain at least 30% recycled material.

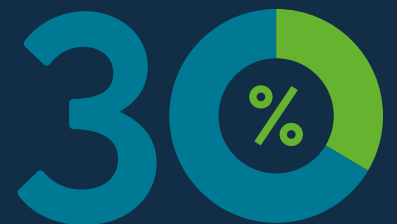


what



We will continue to investigate the use of 30% recycled material

until sustainable supply allows for its introduction in the production of expanded foam products.



All affected customers will be contacted shortly.